

MITRE™ AII POLY CUP



- UHMWPE- meeting optimum market standards of wear and stability
- Both Normal and High Posterior Wall configurations available
- Cup designed to be compatible with Stainless Steel and Ceramic Heads
- Wall thickness:
 - 6mm minimum
 - 28mm maximum
- Rotational and polar grooves
- 3.5mm cement mantle
- 1.5mm deep ridges
- X-Ray wire built in against the circumferential rim, and across the polar axis of the cup

The Comis MITRE™ cemented acetabular component is designed to increase long-term durability and stability in cemented acetabular cups.

The all-UHMWPE (ultra-high molecular weight polyethylene) cup features radial grooves to increase initial cement fixation. The polar grooves act as rotational stabilisers but also increase pressure during the cement-press stage, promoting cement-cancellous bone intrusion.

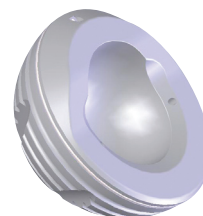
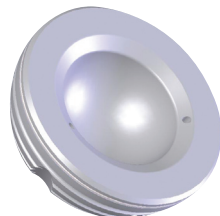
The equatorial wire on both cups allows post operative assessment of the cup orientation to take place. At the most polar aspect of the High-Posterior wall cup, a radiographic marker is built in to give accurate closure reading of the prosthesis post-implantation.

The Comis MITRE™ is available in 7 sizes for both normal and High Posterior Wall cups:

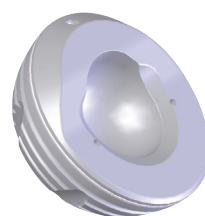
HEAD SIZE	28				32		
CUP SIZE- NORMAL	44	48	52	56	48	52	56
CUP SIZE- HIGH POSTERIOR WALL	44	48	52	56	48	52	56



Normal Cup



High Posterior Wall Cup



This extensive size range makes the Comis MITRE™ an idea option for primary hip replacement surgery.

MITRE™ CEMENTED THA

- Dual Tapered
- Polished
- Centraliser
- Extended lateral shoulder
- 12/14 taper
- 3mm cement mantle

The Comis MITRE™ Stem is a dual tapered, all-polished stem designed for total hip arthroplasty.

Manufactured from high nitrogen stainless steel, the Comis MITRE™ is available in a total of 5 sizes, 4 of which are available in standard and narrow configurations (ST, NA). The offset is measured from the 32 or 28mm modular head which is attached to the stem fixed spigot using a 12/14 Euro Taper.

A cement centraliser is provided with the implant to allow exact implant delivery into the centre of the femoral canal. This stops the implant from penetrating the cortical wall during initial implantation and during the first few months of cement creep.



Size Ref	Offset			Stem Length (not inc. spigot)
	Nominal	28-0 Head	32-0 Head	
0	36	36.4	35.6	127.25
1NA	38	38.4	37.6	149.25
1ST	45	45.4	44.6	149.25
2NA	38	38.4	37.6	149.25
2ST	45	45.4	44.6	149.25
3NA	38	38.4	37.6	149.25
3ST	45	45.4	44.6	149.25
4NA	38	38.4	37.6	149.25
4ST	45	45.4	44.6	149.25

